

**SAN
SIMEON
TRAVEL**

SOUTH AFRICA & NAMIBIA SAFARI

APRIL 30 - MAY 10, 2013

ESCORTED BY JOHN O'REGAN

Itinerary in detail...

30 April 2013

Upon arrival at Johannesburg International Airport you will collect your luggage clear customs and continue to the Domestic Terminal for your onward flight to Mpumalanga the gateway for Krueger Park. Upon Arrival you will be met and transferred to Kirkman's Kamp which promises us the most exciting game drives in all of Africa.

Experience 3 nights at **&Beyond Kirkman's Kamp** in a suite with ensuite bathroom with bath and shower. Your stay includes accommodation, three meals daily, soft drinks, house wines, local brand spirits and beers, teas and coffees, refreshments on game drives, laundry, scheduled safari activities, and nature walks accompanied by experienced armed trackers.

&Beyond Kirkman's Kamp at a glance

- 18 air conditioned cottages with private verandas
- Rim-flow swimming pool
- Outdoor boma and well-stocked Safari Shop
- Twice-daily Big Five game drives in open 4x4 safari vehicles and guided nature walks
- Traversing 6 300 hectares
- 2009 - Profiled as one of Country Life magazine's 6 Romantic Hideaways

Kirkman's Kamp, with its spectacular views of the unspoiled wilderness, is regarded as one of the best loved lodges in the Sabi Sand Game Reserve. It is a well-known historic camp, originally built in the early 1920's, and celebrates the atmosphere of an early South African lowveld homestead. The colonial atmosphere of gracious style and luxury has been retained, and guests step back in time upon entering the original homestead, which now houses the Lodge's sitting, dining and bar areas. Each of the 18 guest cottages has a private veranda and is furnished in the same charming style with ensuite bathrooms.

The large sitting room, with a 1920's ambience, leads through double French doors onto rolling lawns that provide a velvety contrast to the wild and tumbling bush surrounding the Lodge. Breakfast and lunch are served on shady verandas, and dinners are shared in the dramatic boma or in romantic lantern lit bush settings.

06 May 2013

After our final game drive in the Sabi Sand and brunch we depart Kirkman's Kamp for Skakuza airstrip for our Charter flight to Ngala Airstrip. Ngala in Northern Krueger- the Timbavati - offers spectacular game experiences.

Unwind for 3 nights at **&Beyond Ngala Safari Lodge** in a cottage with ensuite bathroom and intimate veranda. Your stay includes three meals daily, soft drinks, house wines, local brand spirits and beers, teas and coffees, laundry, scheduled safari activities, refreshments on game drives, and nature walks accompanied by experienced armed trackers.

&Beyond Ngala Safari Lodge at a glance

- 20 thatched cottages
- Luxurious Safari Suite with private pool
- Swimming pool, outdoor boma, romantic candlelit courtyard and Safari Shop
- Twice-daily Big Five game drives in open 4x4 safari vehicles and guided nature walks
- 2009 - Ngala Private Game Reserve listed in Condé Nast Traveler US Gold List of the World's Best Places to Stay (Africa & Middle East category)

Nestled under a canopy of mopane and tamboti trees, **&Beyond Ngala Safari Lodge** features 20 classic thatched cottages and the luxurious Safari Suite. Each ensuite cottage, with private veranda, exudes a romantic colonial ambience with nostalgic safari memorabilia throughout. The gracious Safari Suite offers guests a spacious sitting room, private swimming pool, and exclusive use of a safari vehicle.

The Lodge's large sparkling swimming pool overlooks natural riverine woodland. Hearty breakfasts and delicious lunches are served in the dappled shade of an enormous weeping boerbean tree. Upon their return from exhilarating evening game drives, guests are welcomed by Ngala's warm, hospitable staff to a banquet in the elegant candlelit courtyard, or to an African feast around the blazing boma fire. The Lodge's thatched dining, bar and sitting areas are open to the warm breezes of the inviting African bushveld.

06 May 2013

This morning after our final game drive we will enjoy brunch. Later this afternoon we will depart Ngala for a 40 minute drive to Hoedspruit Airport for our commercial flight to Johannesburg with a connecting flight to Windhoek, Namibia. Upon arrival in Windhoek we are met and transferred to the Hotel Heinitzburg where we are booked into deluxe rooms at this intimate 5-star hotel overlooking the city of Windhoek. Dinner is included this evening.

07 May 2013

This morning after breakfast we transfer to the domestic airport just outside Windhoek for our charter flight to Sossusvlei. Upon arrival we are met and transferred to **&Beyond Sossusvlei Desert Lodge**. Our lodge is situated in the far northern region of the largest private nature reserve in Southern Africa, the NamibRand Nature Reserve. ***This beautiful part of the Namibia Desert is exclusively accessible to guests of the &Beyond Sossusvlei Desert lodge.***

The fascinating desert-adapted wildlife, combined with the endless space, utter tranquility and extraordinary light, make this one of Africa's most compelling wilderness regions.

During our 3 night stay you may choose from a variety of activities including scenic drives in open 4x4 Safari vehicles, quad biking and nature walks to stargazing and desert picnic excursions. Hot air balloon and flight safaris are also available at additional cost.

&Beyond Sossusvlei Desert Lodge at a glance

- 10 Glass and Stone desert Villas
- Sophisticated stargazing with a professional astronomer
- Quad bike explorations of the dunes with expert guides
- Excursions to Sossusvlei - some of the world's highest sand dunes
- Desert dining

&Beyond Sossusvlei Desert Lodge consists of ten glass and stone desert villas cradled against the ancient mountains. Each air conditioned suite comes with a split level sitting area and fireplace, star-viewing skylight above the bed, en-suite bathroom with a shower, as well as an outdoor shower. Private verandas and spotting scopes allow guests to make the most of the impressive desert view.

10 May 2013

This morning after breakfast we fly back to Windhoek International airport for our return flights or to Windhoek domestic airport if continuing on to Rwanda for the Gorillas of Rwanda Extension.

END OF SAFARI

Trip Cost:

The trip cost will be announced shortly and will include internal flights between Kirkman's and Ngala as well as between Windhoek and Sossusvlei Desert Lodge. International air to Mpumalanga, South Africa, from Hoedspruit, South Africa to Windhoek, Namibia and return from Windhoek to your gateway city are additional. Non-refundable deposit of \$1500.00 per person...Final Payment will be due 90 days prior to Safari.

What's Included

- Accommodation, Meals, drinks and laundry as specified in the itinerary
- Scheduled Flights as specified in the itinerary
- Domestic/international departure tax, fuel and safety levies from airports and airstrips
- Private transfers as specified in the itinerary
- Private game viewing activities as specified in the itinerary, and National parks and concession fees

& What's Not

- Premium brand drinks, champagne, cognacs, cellar wines, cigars and cigarettes
- Gratuities and any items of a personal nature
- Visa fees if applicable
- International Air as described
- Optional extensions to Cape Town, Victoria Falls-Zambia or Rwanda



KIRKMAN'S KAMP

The moment you walk into the main building at Kirkman's Kamp you'll think you've been transported back in time. The fact that the main lawn has warthog grazing on it instead of a neatly dressed party playing croquet does nothing to dispel this illusion; in fact, it all adds to the ambiance of this 1920's South African homestead.

Impeccable and gracious service completes the old world atmosphere, as the spirit of safari comes alive at this evocative camp, set in one of the most renowned wildlife regions in the world.

Each of the 18 guest suites boasts spectacular views of the unspoiled wilderness surrounding the Sand River.

- Set in the prestigious Sabi Sand Game Reserve, which shares unfenced borders with the world renowned Kruger National Park
- Exceptional Big Five game viewing
- Historic atmosphere of authentic 1920's Transvaal homestead
- One of the best loved lodges in the Sabi Sand

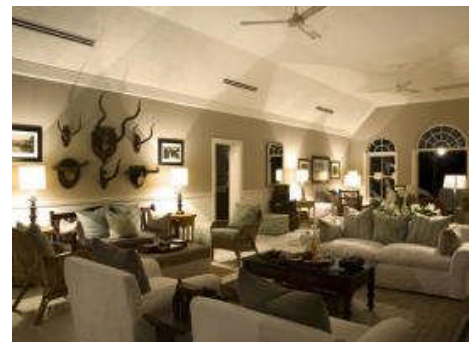


COLONIAL STYLE

Slip into the leisurely pace of yesteryear at the charming and historic Kirkman's Kamp. Located high on a ridge, the camp overlooks the Sand River like a stylish matriarch gazing down upon the landscape. The green tin roof and manicured grounds carve out a soft and cultured niche in the wild and tumbling bush. Enjoy the ritual of afternoon tea served on the spacious veranda or rolling lawn, perhaps in the company of a wild but friendly visitor or two.

A TIME GONE BY

While gracious style abounds at Kirkman's, the wilderness beyond is never forgotten. Wander through the spacious guest areas and admire the many mementos of a time gone by. Clean lines and authentic furniture transport you to the 1920's, while sheer creature comfort is never compromised. Indulge in private time in the fascinating library or while away a few hours in front of the roaring fireplace in the guest sitting room. Leisure hours can be spent by the pool admiring the bush landscape and enjoying a special wildlife sighting in the river valley.



SOUVENIRS OF BYGONE YEARS

Private verandas attached to each suite offer a secluded spot to drink in the breathtaking views. Old-fashioned bedsteads combine seamlessly with modern comfort and souvenirs of bygone years to create a nostalgic safari atmosphere. Generous claw-foot bathtubs complete the picture, while stand-alone showers in each room provide an up-to-date touch.

&Beyond is the #1 Luxury Adventure Travel Company on Earth as listed in the National Geographic Adventure magazine's best outfitters survey.

NGALA SAFARI LODGE

The magic and mystery of Africa come alive in the colonial ambiance of elegant Ngala Safari Lodge.

A timeless, unhurried atmosphere, combined with the quaint traditions of a bygone era, creates an aura of romance and nostalgia. This old-world haven in the midst of the African bush charms with its colonial antiques, silver cutlery and crystal glassware.

Style and grace mingle faultlessly with the rugged natural beauty of the setting, as manicured lawns give way to dense mopane thickets and wild animals saunter down to drink at the waterhole that forms the heart of this authentic safari lodge.



- In Ngala Private Game Reserve, which shares unfenced borders with the renowned Kruger National Park
- Exhilarating Big Five wildlife encounters, with night drives and walking safaris
- Classical colonial ambiance with nostalgic safari memorabilia
- The option of the exclusive Safari Suite, with private swimming pool

ELEGANT SPACES

Protected by a living canopy of immense mopane and tamboti trees, Ngala Safari Lodge carves out a set of intimate, elegant spaces sheltered and secluded by the thick vegetation. Twenty thatched cottages with shaded verandas nestle among the trees, ensuring the perfect privacy of your retreat. For those in need of even more personal space, the exclusive Safari Suite offers its own sitting room and swimming pool.



DAPPLED SHADE

Nature is never far at Ngala, with breakfast and lunch served in the shade of an enormous weeping boerebean tree. A walled courtyard provides a sheltered space to indulge in sumptuous cuisine, while the boma creates a dramatic setting for fire-lit dinners. An afternoon by the poolside rewards guests with much more than just a refreshing dip - the riverine woodland it borders provides endless opportunities for bird watching. Secret nooks and crannies with cushy sofas are ideal for quiet hours of contemplation in the leafy shade.

CLASSIC SAFARI

Creamy soft linen on curtained beds, soft tinted prints and etchings combine with the evocative smell of thatch to carry the classic safari atmosphere into your private cottage. The green slate of the bathroom reflects the dappled sunlight from outside, creating the dazzling effect of leafy shadows carried into interiors that cannot be separated from the luscious beauty outside. At night, a myriad lanterns and candles peep out between the boughs of trees, shining out a promise of warmth and comfort.



&Beyond is the #1 Luxury Adventure Travel Company on Earth as listed in the National Geographic Adventure magazine's best outfitters survey.

WINDHOEK - NAMIBIA

Hotel Heintzburg

*“A Gorgeous Hotel With Panoramic Views Of The City
And The Khomas Hochland Mountains”*



Windhoek

The country's capital is a bustling metropolis that is unexpectedly neat and orderly - though this is perhaps less surprising when one considers it was a German territory for many years. This is the main port of call for most tourists and all travellers pass through the city at least once. Windhoek lies in a pretty valley, with buildings very much in the German architectural style. The German presence can be strongly felt in the food, restaurants – and, of course, the beer.



THE SPIRIT OF HOTEL HEINTZBURG

A small, intimate hotel, the **Heintzburg** boasts ensuite rooms with excellent views facing the pristine pool, the mountainous Khomas Hochland or the beautiful courtyard.

A full continental breakfast is served outdoors, in the garden café overlooking the city and the mountain range, or in the grand Aschenborn Room in the old castle. Centrally located, the Heintzburg is a short drive from the heart of town. The wine cellar boasts the largest private collection in Namibia. The superb Leo's Restaurant more than compliments the cellar, with a remarkable view of the Windhoek skyline and a deserved reputation for fine dining. Mountain biking, hiking, horseback riding, golf and swimming are exciting adventures for energetic guests.

WHAT WE LOVE ABOUT HOTEL HEINTZBURG

- Indulge in a gourmet meal at one of Hotel Heintzburg's very famous restaurants, Leo's at the Castle – which overlooks the city skyline.
- The fantastic wine cellar is a beautiful setting for intimate dinners.
- The romantic history of the hotel, which was commissioned by Count von Schwerin for his fiancée, Margarethe von Heintz, in 1914 – ask your concierge to let you in on the history of this dramatic destination.

www.heintzburg.com



recommended by &Beyond



SOSSUSVLEI

DESERT LODGE



One of the oldest, driest and most pristine areas on Earth, the Namib Desert is a world of vast spaces, endless horizons, dramatic deserts capes and jagged mountain heights. The largest private nature reserve in Southern Africa, the NamibRand Nature Reserve spans 180 000 hectares (445 000 acres) of this unspoiled desert wilderness. The spectacular dunes at Sossusvlei, arrayed in magnificent hues of orange, buttermilk, pumpkin and sienna, tower over a vast, dry pan. Over 230 meters (750 feet) high and constantly twisted and shaped by the wind, these breathtaking dunes are among the highest in the world. Known as "The Living Desert", the dunes of the Namib abound with desert-adapted beetles, spiders, lizards, gerbils, golden moles and other creatures, all leaving their telltale tracks in the fine sand. The plains and dry watercourses are home to Oryx, springbok, Burchell's zebra, kudu, ostrich and giraffe. Predators include leopard, spotted hyena, black-backed jackal, Cape and bat eared foxes, termite-eating aardwolf and African wildcat. More than 114 bird species can be seen in the desert skies. The fascinating desert-adapted wildlife, combined with the endless space, utter tranquility and extraordinary light, make this one of Africa's most compelling wilderness region.



Cradled against the ancient mountains, &Beyond Sossusvlei Desert Lodge is renowned for its desert experience with luxurious accommodation overlooking the stark yet beautiful Namib Desert. Designed to capture the splendor and solitude of the desert, just ten stone and glass desert villas spread out along the curve of the escarpment allowing absolute privacy. Each air conditioned suite features a private veranda, split-level bedroom and living room with fireplace, ensuite glass-encased bathroom and outdoor shower. The villas are equipped with a star-viewing skylight, discreet CD system, custom-stocked personal bar and compact spotting scope for magnificent star and game viewing. The guest area, where walls have become windows that fold away completely, boasts unimpeded desert vistas. The split-level Lodge features a fire-lit bar, comfortable sitting room, swimming pool, wraparound verandas and a Safari Shop. A fine selection of

wines from an impressive walk-in wine cellar complements delicious Pan African meals. Guests can escape the desert heat with a revitalizing midday dip in the pool fed by water from an underground spring. At sunset, animals are drawn to a nearby waterhole, enhancing desert sundowner drinks.

OPTIONAL PRE SAFARI CAPE TOWN PACKAGE



Pre Safari Tour of Cape Town, South Africa

April 26 – 30, 2013

Itinerary in detail...

April 26, 2013 ARRIVE CAPE TOWN, SOUTH AFRICA

Upon arrival you will be met and transferred to the Winchester Mansions Hotel situated on Cape Town's Platinum mile and overlooking the Atlantic Ocean. Winchester Mansion is an exclusive, privately owned 4 star hotel in Cape Town. It sets itself apart among other hotels in and around Cape Town with its spectacular beachfront location, stylish elegance and personalized service.

Winchester Mansion Hotel

April 27, 2013 CAPE TOWN FULL DAY CAPE POINT TOUR

After breakfast you will enjoy a full day tour of Cape Point where the Indian and Atlantic Oceans meet. Our tour today includes Hout Bay, optional 30-minute cruise to the seal colony in a glass bottom boat (weather dependent). Cape Point nature reserve, Cape Point observatory, Cape of Good Hope, a visit to the penguin colony of Simonstown and a visit to Kirstenbosch Botanical Gardens. The tour will be stopping in a quaint fishing village for a lunch break.

Winchester Mansion Hotel (B)

April 28, 2013 CAPE TOWN WINELANDS TOUR

Once again after breakfast enjoy a wonderful tour heading north from the city into the wine lands. The tour today includes several world class wineries with all tastings included.

Winchester Mansion Hotel (B)

April 29, 2013 CAPE TOWN CITY TOUR

After breakfast you have a half-day city tour – Morning with a visit to Table Mountain – weather permitting. If Table Mountain is not fogged in you will have the opportunity to purchase a tram ticket and enjoy the views from the top. Otherwise a visit will be made to Signal hill which also has great views of the city and coastline. There is a scenic coastal drive through Clifton & Sea Point and a guided boat cruise of the Waterfront. Later on the tour we will visit Green Market Square, District Six and a walk through the Company Gardens. Then continue on to view the Houses of Parliament, City Hall, the Castle and Slave lodge. You will be back at the hotel in time for lunch and the balance of the day is at your leisure.

Winchester Mansion Hotel (B)

April 30, 2013 CAPE TOWN TO MPUMALANGA VIA JOHANNESBURG

An early start this morning as you are departing from Cape Town and flying to Johannesburg and then continuing on with the group to Mpumalanga the gateway to Kruger Park. On arrival we will be met and transferred to Kirkman's Kamp in the Sabi Sands Game Preserve.

(Please note that as this is a private tour that we have the ability to change the itinerary to better suite weather conditions or traffic patterns. As such we do hope that you will be flexible as regards the order of the planned sightseeing.)

Trip Cost: \$1245.00 per person double occupancy

Non-refundable Deposit due is \$250.00 per person. Final payment is due 90 days prior to Safari.

What's included

- Accommodation
- Meals as specified in the itinerary
- private transfers as specified in the itinerary

& what's not

- Gratuities and any items of a personal nature
- Meals not specified in the itinerary



OPTIONAL POST SAFARI RWANDA PACKAGE



A GORILLA TREK

*Dramatic...Thrilling...Poignant...The
Wildlife Experience of a Lifetime*

**GORILLAS OF RWANDA
MAY 10-15, 2013**

Itinerary in detail...

10-11 May 2013

Today you will return to Windhoek in the Afternoon for an additional overnight at an airport hotel and then continue on to Kigali Rwanda via Johannesburg (subject to air schedules for 2013-your transit from Namibia to Rwanda may require either 1 night in Windhoek and 1 in Kigali or 2 in Kigali). Upon arrival in Kigali you will collect your luggage, clear customs and take the Top Tower Hotel Shuttle bus from the airport to the hotel. The balance of your day is at leisure. Note that we will book these hotel nights' at the most economical rates possible and you will pay for it at checkout.

12 May 2013

This morning after breakfast you will be met at Top Tower Hotel at approx. 9:00am for your private road transfer to Sabyinyo Silverback Lodge.

Experience 3 nights at **Sabyinyo Silverback Lodge** in a cottage with ensuite bathroom. Your stay includes accommodation, all meals, laundry, room service and drinks.

Sabyinyo Silverback Lodge at a glance....

- 8 ensuite cottages
- Breathtaking views of the Virunga Volcanoes and surrounding farmlands
- Mouth-watering menus, a library and games room, a responsible tourism room and boutique store
- Adventures such as hikes in the Parc des National in search of mountain gorilla and golden monkeys, visits to village markets and Dian Fossey Memorial and Research Centre and excursions to the lava flows outside of Ruhengeri town

Hidden amongst the foothills of the spectacular Virungas — a chain of 15 000 foot volcanoes that lie in what is thought to be the heart of the legendary land of King Solomon's mines, is the beautiful **Sabyinyo Silverback Lodge**. Here, surrounded by the tropical forests of Rwanda, just a stone's throw away from the renowned Parc National des Volcans, guests can unwind in one of five luxurious stone cottages, two suites or, for small groups, an elegant family suite — each with a large sitting room, fireplace, stylish ensuite bathroom and private veranda.

Scrumptious menus can be savored in the beautiful dining room and refreshing sundowners can be enjoyed on any one of the two patios that provide breathtaking views of the Virunga volcanoes and surrounding farmlands. After an adventure-filled day guests can retreat to the library/games room or brush up on their knowledge in the responsible tourism/community awareness room. A boutique store adds to guest delight. Adventures include hikes into the Parc des National in search of the majestic mountain gorilla and the enchanting golden monkey, cultural excursions, visits to the lava flows outside Ruhengeri town and vibrant village markets or to the Dian Fossey Memorial and Research Centre.

13 – 14 May

You will enjoy a full day Gorilla Trek as well as up to 4 game drives in the National park.

15 MAY

Today you will depart Sabyinyo Silverback Lodge on your private road transfer to Kigali Airport for departure on your scheduled flight to Kilimanjaro International Airport in Tanzania

Trip Cost: \$2768.00 per person (includes one-day \$500 Gorilla Trek Permit) Plus air fare to Kigali, Rwanda Non-refundable Deposit due is \$550.00 per person. Final payment is due 90 days prior to Safari.

What's included

- Accommodation
- National parks and concession fees
- Meals, drinks and laundry as specified in the itinerary
- private transfers as specified in the itinerary
- 1 x Full day Gorilla Trek on the May 13 or 14 2012

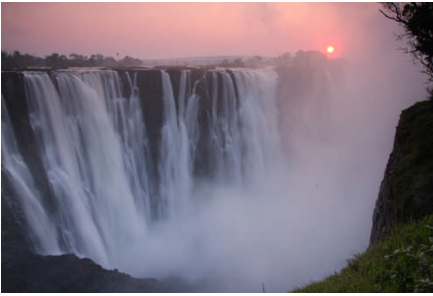
& what's not

- Gratuities and any items of a personal nature
- Top Tower Hotel arrival night on May
- Additional air fare to Rwanda

Sabyinyo Silverback Lodge
RWANDA



OPTIONAL POST SAFARI VICTORIA FALLS, ZAMBIA PACKAGE



VICTORIA FALLS, ZAMBIA MAY 10 – MAY 15, 2013

Itinerary in detail...

10-11 May 2013 WINDHOEK TO LIVINGSTONE, ZAMBIA VIA JOHANNESBURG

Today you will return to Windhoek in the Afternoon for an additional overnight at an airport hotel and then continue on to Livingstone, Zambia via Johannesburg (subject to air schedules for 2013-your transit from Namibia to Zambia may require either 1 night in Windhoek and 1 in Johannesburg or just 1 in either city). Note that we will book these hotel nights' at the most economical rates possible and you will pay for it at checkout.

12 May 2013 JOHANNESBURG TO LIVINGSTONE, ZAMBIA

This morning after breakfast you will continue from Johannesburg Airport for your International flight to Livingstone, Zambia. (FLIGHT TIME AND COST TO BE ANNOUNCED) Upon arrival in Livingstone you are met and transferred to the hotel. Later in the afternoon you are transferred to the Zambezi River above the falls for the "sundowner" cruise. Livingstone first wrote about this "Crimson Heart of Africa bleeding over the Kandahar Rapids," and sunset on the Zambezi has captivated travelers since. To add to your enjoyment, refreshments and open bar are provided onboard for that famous African "sundowner." ROYAL LIVINGSTONE HOTEL (B)

13 MAY 2013 LIVINGSTONE - VICTORIA FALLS

During your sightseeing excursion this morning, you will have time for some shopping for local crafts, and artifacts, before continuing on a conducted tour of Victoria Falls. Your guide will lead you through the natural rain forest to selected vantage points from which you will see the main cataracts that comprise the falls. Join your excursion this afternoon, to Makuni Village, home of the Leya people. This is a unique opportunity to see how local people live in a working village, not one built for tourists. Home to 6,000 people, your visit here provides a fascinating look into their lifestyle. A member of the village shows you around so you can see how traditional huts are built and decorated, take a look inside, meet the residents, and see the locals at work. Curios made in the village are for sale so take some local currency. ROYAL LIVINGSTONE HOTEL (B)

14 MAY 2013 LIVINGSTONE - VICTORIA FALLS

Today is completely at your leisure. Perhaps enjoy an excursion to Zimbabwe, a flight over the Victoria Falls in a Micro-Light airplane, or Tiger Fishing in the Zambezi. You may even want to simply enjoy your beautiful hotel. ROYAL LIVINGSTONE HOTEL (B)

15 MAY 2013 LIVINGSTONE - VICTORIA FALLS

Today you will have the morning at leisure before you are transferred to the airport for your flight on to Johannesburg to connect to your onward flight. ROYAL LIVINGSTONE HOTEL (B)

Trip Cost: \$1475.00 per person double occupancy plus air fare to Livingstone, Zambia
Non-refundable Deposit due is \$250.00 per person. Final payment is due 90 days prior to Safari.

The Royal Livingstone

Curved seductively against the banks of the mighty Zambezi River, the Royal Livingstone Hotel stretches nymph-like along the riverbank in a series of private villas.

For the more discerning traveler in search of luxury, extravagance and sheer indulgence, there can be no better place than the Royal Livingstone Hotel. Set in the lush riverine belt and touching the banks of the great Zambezi River, this earthly paradise provides a serene haven at the most magical place in Africa. It's a place that will ignite your heart and soothe your soul, where you can enjoy the incredible majesty of Africa and witness one of the greatest natural wonders of the world. The Royal Livingstone Hotel captures the charms of a bygone era, indulges your every fantasy and enables you to experience a new level of utter comfort and sophistication at the Victoria Falls.



Named after the intrepid explorer Dr David Livingstone, The Royal Livingstone will immerse you in the romance and style of a bygone era. Bathed in the shade of Acacia trees, the raw splendor of the bush blends perfectly with luxurious living. Luxuriate in the sophisticated harmony of antique and ethnic décor, superb cuisine and personalized service. Every detail of this 5-star luxury hotel captures the opulence and elegance of times gone, while echoing the stunning diversity of the African bush.